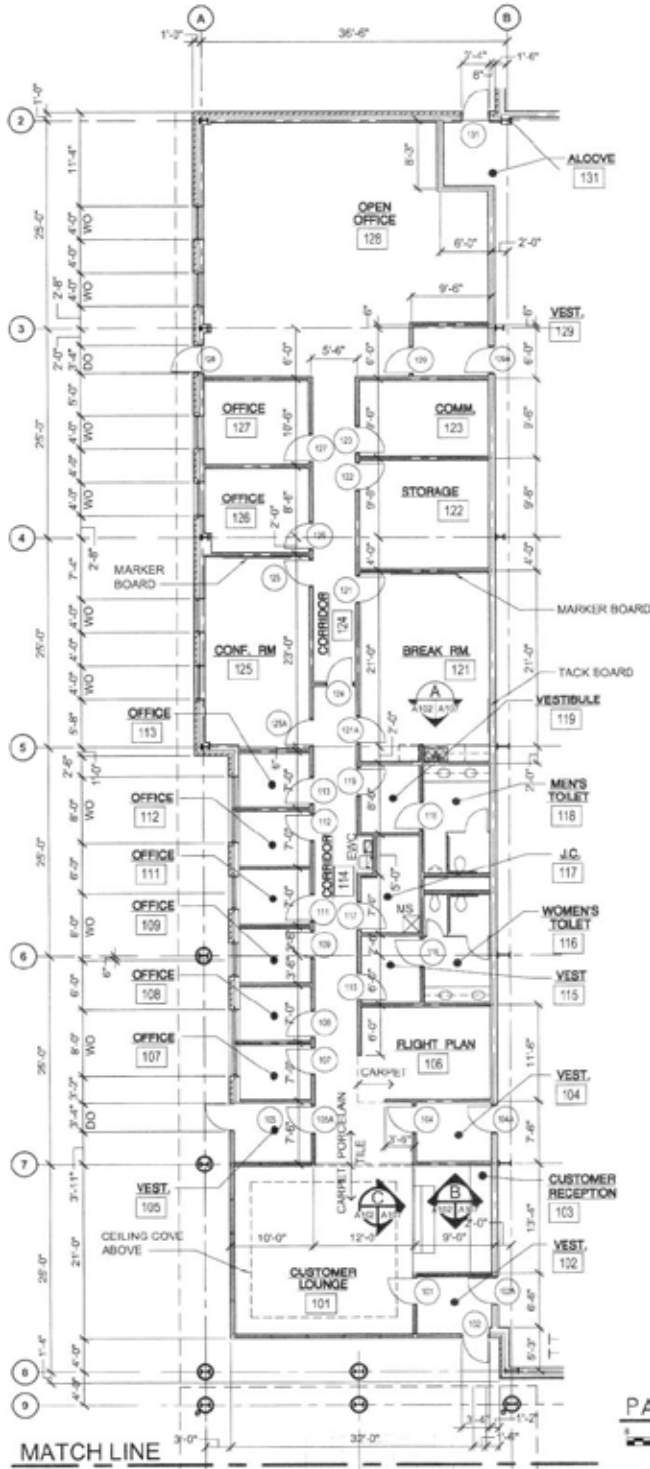


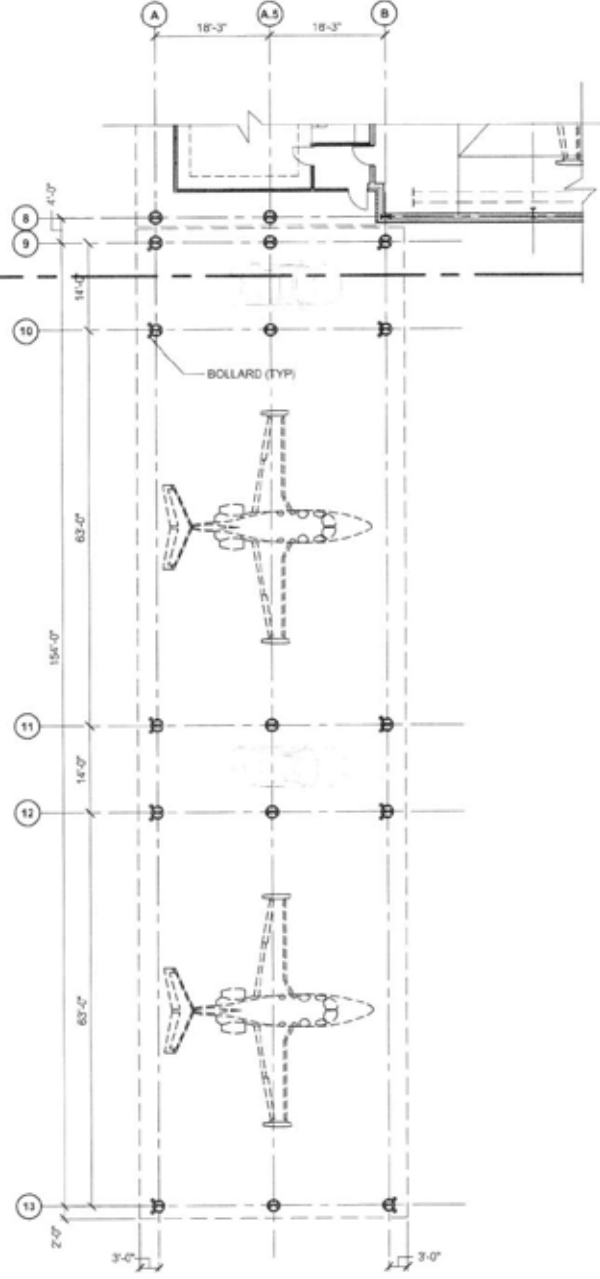
GAINESVILLE REGIONAL AIRPORT - HANGAR FLOOR PLANS



1:\cd\pse_avision\37060\arch\A102.dwg



MATCH LINE



PARTIAL FLOOR PLAN - SOUTH

SCALE IN FEET

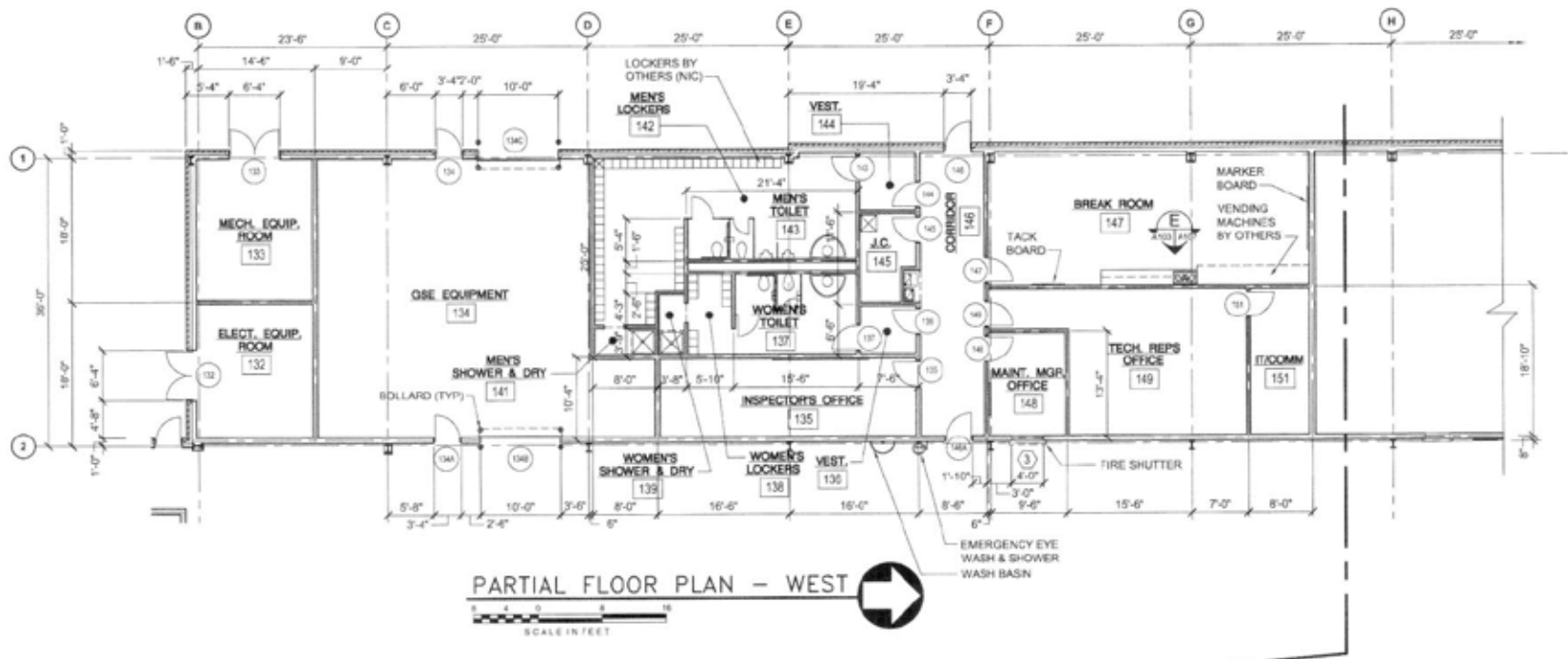
PARTIAL CANOPY PLAN

SCALE IN FEET

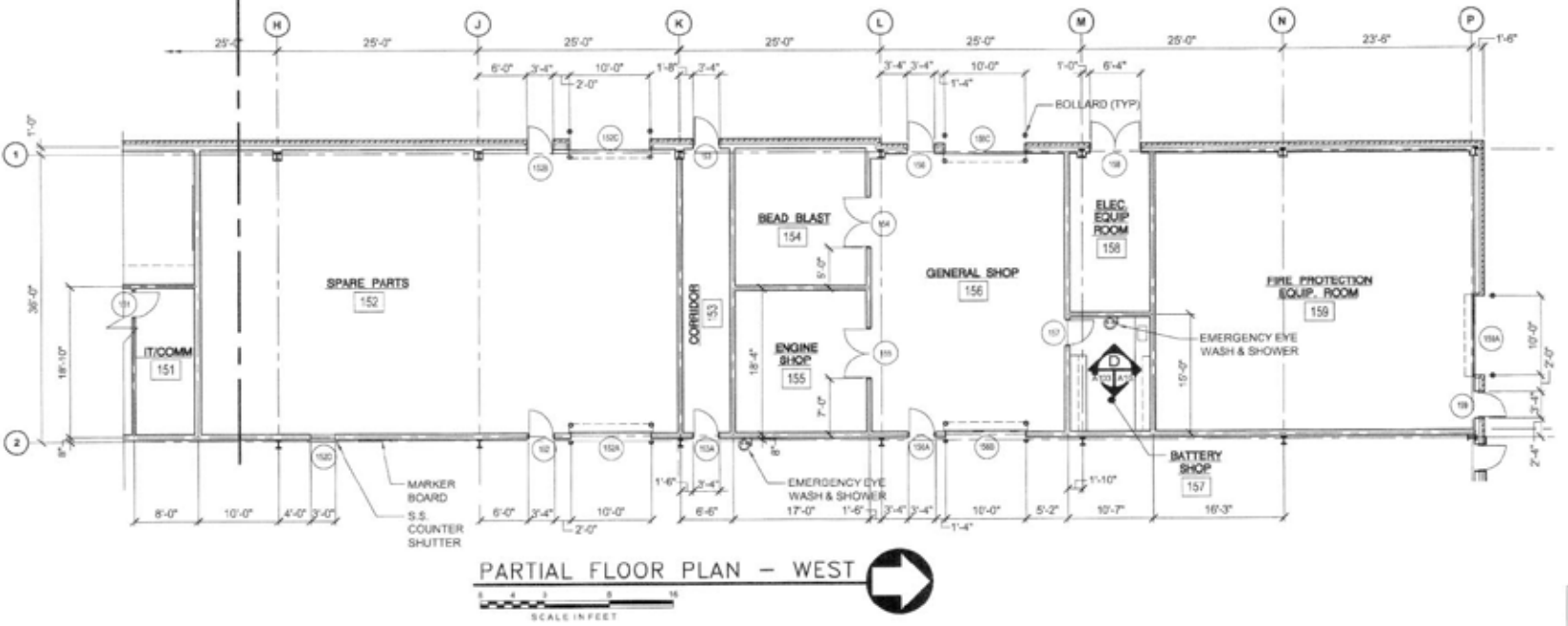
DRAWINGS ARE SCHEMATIC
NOT FOR CONSTRUCTION

 8402 River Parkway Kansas City, MO 64114 (816) 333-8800 Fax: (816) 333-8800	
 117, 1911 487 S.E. 8th, Ft. Lauderdale, FL 33304 (954) 574-4000 Fax: (954) 574-4000	
SMALL AIRCRAFT TRANSPORTATION SYSTEM (SATS) MAINTENANCE FACILITY PARTIAL CANOPY PLAN - SOUTH GAINESVILLE REGIONAL AIRPORT	
PROJECT NO. 40238 DRAWN: OPS CHECKED: JAM DATE: 01-21-06	APPROVED: AGS REVIEWED: JAM DATE: 01-21-06
GAINESVILLE, FL	
REV. 1 FACILITY DESIGN REQUIREMENTS	DESCRIPTION DATE: 02-08 BY:

A102



PARTIAL FLOOR PLAN - WEST

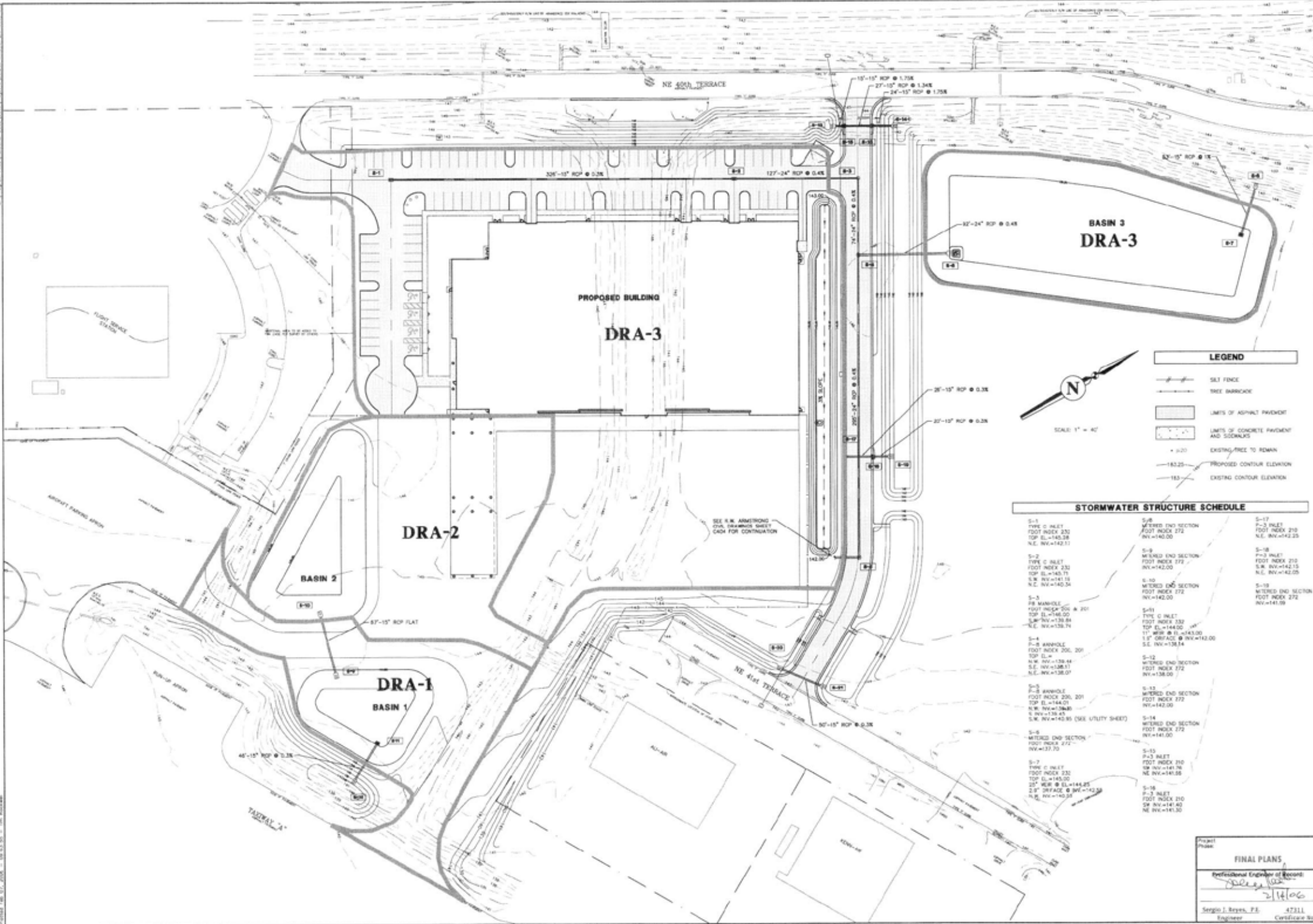


PARTIAL FLOOR PLAN - WEST

DRAWINGS ARE SCHEMATIC
NOT FOR CONSTRUCTION

I:\cadd\air\station\37060\arch\37060 A103.dwg

1000 West Parkway Kansas City, MO 64114 (816) 333-9400 Certificate of Authorization #0000066	
4927 S.E. 25th Street, Suite B Fort Lauderdale, FL 33309 (954) 371-3300 Certificate of Authorization #883	
SMALL AIRCRAFT TRANSPORTATION SYSTEM (SATS) MAINTENANCE FACILITY	PROJECT NO. 37060 DRAWN BY: [blank] REVISIONS: [blank] APPROVED BY: [blank] DATE: 07-31-08
GAINESVILLE REGIONAL AIRPORT PARTIAL FLOOR PLAN - WEST	GAINESVILLE, FL RKS
FACILITY DESIGN REQUIREMENTS REV. DESCRIPTION 131-132 133-134 135-136 137-138 139-140 141-142 143-144 145-146 147-148 149-150 151-152 153-154 155-156 157-158 159-160	
A103	



Structure ID	Structure Type	Foot Index	Top Elevation	Bottom Elevation
S-1	TYPE C INLET	FOOT INDEX 232	TOP EL.=145.28	N.E. INV.=142.11
S-2	TYPE C INLET	FOOT INDEX 233	TOP EL.=145.71	S.W. INV.=141.15 N.E. INV.=140.34
S-3	P-8 MANHOLE	FOOT INDEX 206 @ 201	TOP EL.=146.00	S.W. INV.=136.84 N.E. INV.=136.74
S-4	P-8 ANNHOLE	FOOT INDEX 206, 201	TOP EL.=	S.W. INV.=138.44 S.E. INV.=138.51 N.E. INV.=138.07
S-5	P-8 ANNHOLE	FOOT INDEX 206, 201	TOP EL.=144.01	S.W. INV.=136.85 S.E. INV.=142.85 (SEE UTILITY SHEET) N.E. INV.=137.70
S-6	METERED END SECTION	FOOT INDEX 272	INV.=143.00	
S-7	TYPE C INLET	FOOT INDEX 232	TOP EL.=145.00	2.5' W/FR @ EL.=144.25 2.5' D/FRAZE @ INV.=142.50 N.E. INV.=140.58
S-8	METERED END SECTION	FOOT INDEX 272	INV.=143.00	
S-9	METERED END SECTION	FOOT INDEX 272	INV.=143.00	
S-10	METERED END SECTION	FOOT INDEX 272	INV.=143.00	
S-11	TYPE C INLET	FOOT INDEX 232	TOP EL.=144.00	11" W/FR @ EL.=143.00 1.5' D/FRAZE @ INV.=142.00 S.E. INV.=138.14
S-12	METERED END SECTION	FOOT INDEX 272	INV.=138.00	
S-13	METERED END SECTION	FOOT INDEX 272	INV.=143.00	
S-14	METERED END SECTION	FOOT INDEX 272	INV.=143.00	
S-15	P-3 INLET	FOOT INDEX 210	TOP INV.=141.78	NE INV.=141.08
S-16	P-3 INLET	FOOT INDEX 210	TOP INV.=141.40	NE INV.=141.30
S-17	P-3 INLET	FOOT INDEX 210	N.E. INV.=142.25	
S-18	P-3 INLET	FOOT INDEX 210	S.W. INV.=142.15	N.E. INV.=142.05
S-19	METERED END SECTION	FOOT INDEX 272	INV.=141.00	

SMALL AIRCRAFT TRANSPORTATION SERVICES (SATS) MAINTENANCE FACILITY MASTER DRAINAGE PLAN	
GAINESVILLE REGIONAL AIRPORT	GAINESVILLE, FL
PROJECT NO: 2004-309	DATE: 02-06-06
DRAWN: TAR	REVIEWED: S-R
DESIGNED: S-R	APPROVED:
DATE:	DATE:
REV: 1	DESCRIPTION:
1. WORK DESIGN	DATE: 10/2/04

FINAL PLANS
 Professional Engineer of Record:
 Sergio J. Byres, P.E.
 2/16/06
 Engineer Certificate No. 47311

C305

GAINESVILLE REGIONAL AIRPORT
(352) 373-0249
LYNN.NOFFSINGER@FLYGAINESVILLE.COM
3880 NE 39TH AVENUE
GAINESVILLE, FL 32609

